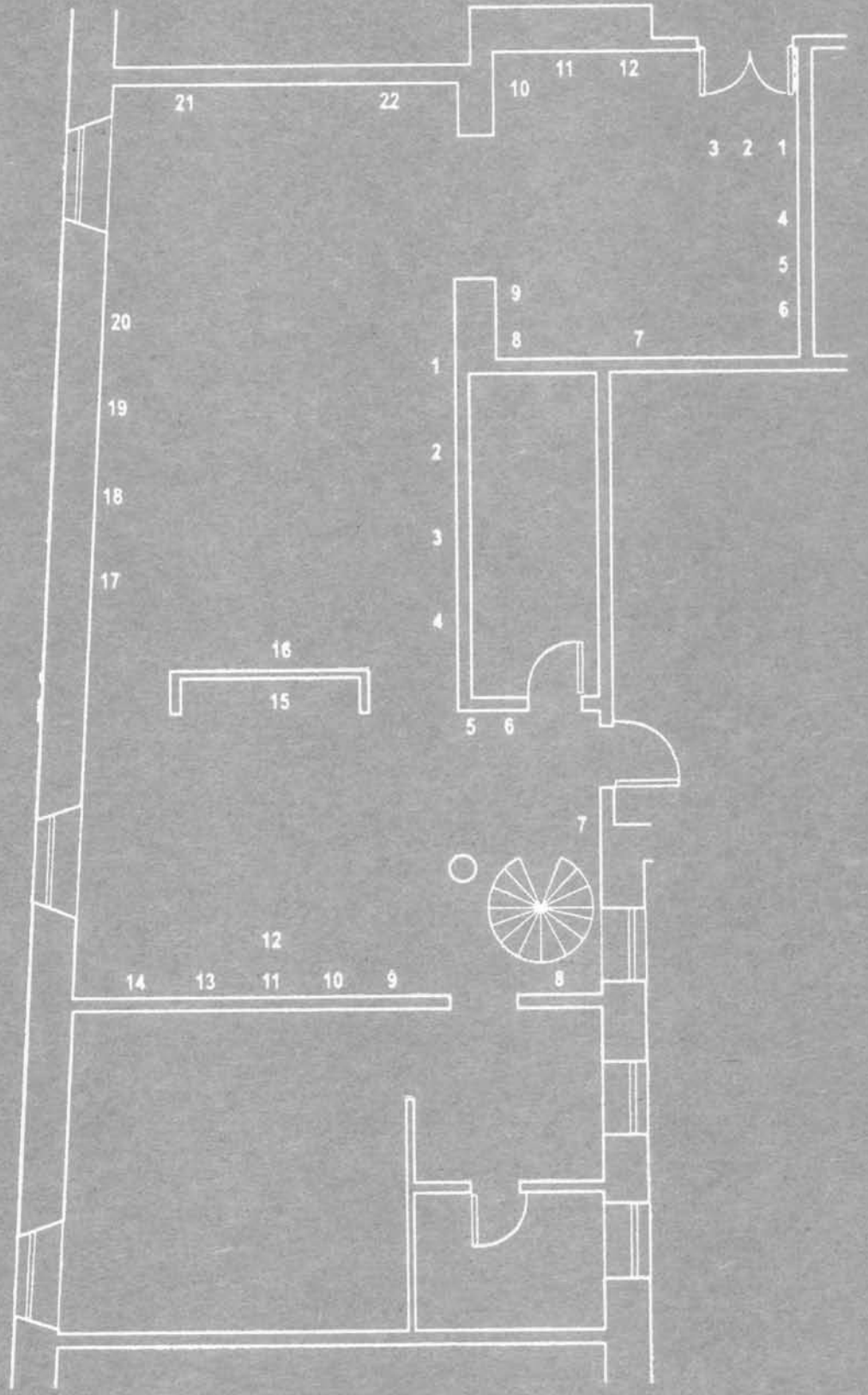


560 Broadway A New York Drawing Collection at Work, 1991-2006



Mary Hambleton  
*Untitled Drawing*, 1994–95  
Tempera, graphite, and gouache on paper,  
5½ x 4¼" (14.9 x 10.5 cm)  
2000.41.16

Christine Hiebert  
*S.98.30*, 1998  
Charcoal on paper prepared with rabbit-  
skin glue, 10 x 10" (25.4 x 25.4 cm)  
2000.41.43

Claus Hoie  
*Untitled*  
Watercolor on paper, 34½ x 24"  
(87.6 x 61 cm)  
2000.41.19

Chuck Holtzman  
*Untitled 2*, 1985  
Charcoal on paper, 14 x 12"  
(35.6 x 30.5 cm)  
2000.41.33

Matthew Jacobs  
*Untitled*, 1995  
Charcoal on paper, 10 x 10"  
(25.4 x 25.4 cm)  
2002.19.1

David Jeffrey  
*2/7/89*, 1989  
Charcoal on paper on masonite,  
16½ x 16½" (41.6 x 41.6 cm)  
2000.41.28

David Jeffrey  
*Untitled*, 1991  
Crushed charcoal and acrylic on rag  
paper, mounted on board, 40 x 32 x 2½"  
(101.6 x 81.3 x 6.3 cm)  
2005.12.6

Michael Jenkins  
*Detail #27*, 1991  
Cotton and felt on paper, 14 x 11"  
(35.6 x 27.9 cm)  
2005.12.7

Michael Jenkins  
*Detail #28*, 1991  
Cotton and felt on paper, 14 x 11"  
(35.6 x 27.9 cm)  
2005.12.8

Bronlyn Jones  
*Untitled*, 1998  
Pencil on paper, 8 x 6½" (20.3 x 16.5 cm)  
2006.8.7

Bronlyn Jones  
*Untitled*, 1999  
Pencil on paper, 9¼ x 7¼" (23.2 x 19.4 cm)  
2006.8.8

Amy Kaufman  
*On/Off 5*, 1999  
Pastel on paper, 18 x 19½" (45.7 x 49.8 cm)  
2000.41.71

Amy Kaufman  
*On/Off 6*, 1999  
Pastel on paper, 18 x 19½" (45.7 x 49.8 cm)  
2000.41.70

Elise Kaufman  
*Chart for a Dark Age*, 1991  
Mixed media on paper, 80 x 65"  
(203.2 x 165.1 cm)  
2000.41.67

Michelle Kelly  
*Untitled 9/98*, 1998  
Graphite on blue paper, 9¼ x 9¼"  
(24.8 x 24.8 cm)  
2000.41.42

Hugh Kepets  
*Drawings for relief prints*, 1975  
Ink on paper, two sheets, each 4 x 3½"  
(10.2 x 8.9 cm)  
2000.41.45.a.b

John King  
*Study for Indicator*, 1997  
Graphite on paper, 26¼ x 40"  
(66.7 x 101.6 cm)  
2001.19.9

Rick Klauber  
*Untitled (D 11 95)*, 1995  
Oil on paper, 30 x 22" (76.2 x 55.9 cm)  
2005.12.9

Bill Komoski  
*Untitled*, 1986  
Watercolor on paper, 12¼ x 9¼"  
(31.1 x 23.8 cm)  
2000.41.49

Bill Komoski  
*Untitled*, 1986  
Watercolor on paper, 10½ x 8"  
(26.3 x 20.3 cm)  
2000.41.10

Kathleen E. Kucka  
*Circle Burns*, 1996  
Burns on paper with charcoal, 7 x 5¼"  
(17.8 x 13 cm)  
2000.41.14

Kathleen E. Kucka  
*Three Burns*, 1996  
Burns on paper with charcoal, 7 x 5"  
(17.8 x 12.7 cm)  
2000.41.50

David Lasry  
*Untitled*, 1991  
Ink on paper, two sheets, each 6 x 8"  
(15.2 x 20.3 cm)  
2000.41.39.a.b

George Lawson  
*Untitled*, 1992  
India ink on handmade paper, 30 x 22¼"  
(76.2 x 57.8 cm)  
2000.41.29

Ann Ledy  
*Untitled (b.) 88/1-4*, 1988  
Colored pencil and pencil on Japanese  
paper, four sheets, each 7¼ x 9¼"  
(18.4 x 24.8 cm)  
2000.41.66.a-d

Sol LeWitt  
*Pyramid #3*, 1985  
Ink wash on paper, 19¼ x 23¼"  
(50.2 x 59.4 cm)  
2000.41.60

Li-lan  
*Three and Two (C)*, 1980  
Watercolor and colored pencil on paper,  
22½ x 30" (57.1 x 76.2 cm)  
2000.41.18

Ann Litke  
*Untitled*, 1985  
Watercolor and pencil on vellum,  
16½ x 72" (41 x 182.9 cm)  
2000.41.75

**Sharon Loudon**  
*Untitled*, 1993  
Ink and graphite on double-sided mylar,  
11 x 8½" (27.9 x 21.6 cm)  
2000.41.2

Tom Martinelli  
*Untitled*, 1991  
Watercolor and gouache on paper,  
13 x 15½" (22 x 40.3 cm)  
2004.4.2

Kathleen McShane  
*Untitled*, 1998  
Graphite and matte medium on grid paper,  
11 x 6¼" (27.9 x 17.1 cm)  
2004.4.3

Kathleen McShane  
*Untitled*, 1998  
Graphite and matte medium on grid paper,  
11 x 9¼" (27.9 x 24.4 cm)  
2004.4.4



Sharon Loudon, *Untitled*, 1993





**The Collection at Work**